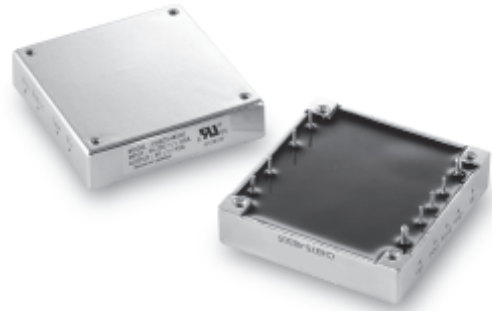


## 50 Watt, CHB-W Series, DC-DC Converter (Single Output)

**ALL PSU LTD**  
Electronic Power Solutions

- Wide 4:1 Input Range
- Tightly Regulated Outputs
- 1500V Isolation
- Industry Standard Encapsulated Package
- Five Sided Metal Case
- Continuous Short Circuit Protection
- High Efficiency up to 84%
- -40 to +100 °C Operational Temperature Range



### Specification (typical values shown)

Input Ranges.....	9~36 Volts, 18~75 Volts DC
Outputs.....	Single (see table below plus trim range of +/-10%)
Line Regulation.....	+/-0.2% max. (across full input range)
Load Regulation.....	+/-0.2% max. (zero load to full load)
Efficiency.....	See table for each model
Short Circuit Protection.....	Continuous
Over Current Protection.....	110~160% of nominal rated output
Isolation Voltage.....	I/P~O/P: 1.5kVDC, I/P&O/P~Case: 1.5kVDC
Switching Frequency.....	300kHz
Operating Temperature.....	-40 to +100 °C case temperature @ full load
Thermal Shutdown.....	100 °C (typ.) case temperature
Storage Temperature.....	-55 to +105 °C
Approval.....	UL(cUL)
Case Material.....	Aluminium,
Weight.....	94 g

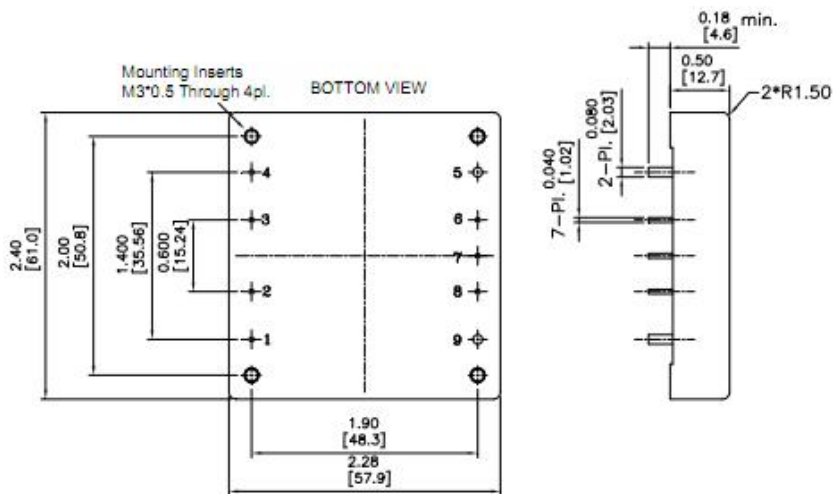
### Models and Ratings

Model	Input Range	Output Voltage	Output Current	Efficiency
<b>CHB50W-24S33</b>	9~36 VDC	3.3 V	10 A	77%
<b>CHB50W-24S05</b>	9~36 VDC	5.0 V	10 A	81%
<b>CHB50W-24S12</b>	9~36 VDC	12.0 V	4.16 A	83%
<b>CHB50W-24S15</b>	9~36 VDC	15.0 V	3.33 A	83%
<b>CHB50W-24S24</b>	9~36 VDC	24.0 V	2.08 A	83%
<hr/>				
<b>CHB50W-48S33</b>	18~75 VDC	3.3 V	10 A	78%
<b>CHB50W-48S05</b>	18~75 VDC	5.0 V	10 A	82%
<b>CHB50W-48S12</b>	18~75 VDC	12.0 V	4.16 A	84%
<b>CHB50W-48S15</b>	18~75 VDC	15.0 V	3.33 A	84%
<b>CHB50W-48S24</b>	18~75 VDC	24.0 V	2.08 A	84%

For mechanical data and pinout, see next page

ALL PSU Ltd, Unit D6 Laser Quay, Culpeper Close, Medway City Estate,  
Rochester, Kent, ME24HU, Tel : 01634 725527, Fax : 01634 739111,  
Email : [sales@allpsu.co.uk](mailto:sales@allpsu.co.uk) , Web : [www.allpsu.co.uk](http://www.allpsu.co.uk)

## Mechanical Details and Pin-Out



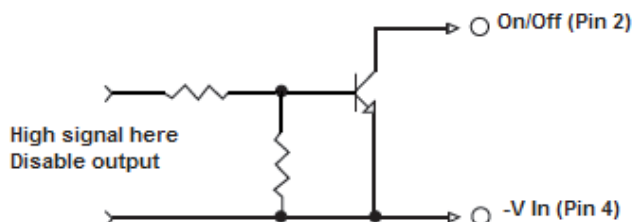
Pin	Function
1	+V In
2	On/Off
3	Case
4	-V In
5	-V Out
6	- Sense
7	Trim
8	+ Sense
9	+ V Out

### Note:

Standard remote on/off , Open Circuit = Output on, <0.8 Volts = Output off

For negative logic remote on/off, add suffix "N" to the part number, e.g. CHB50W-12S12N

### Remote On/Off Control



### External Output Trim

