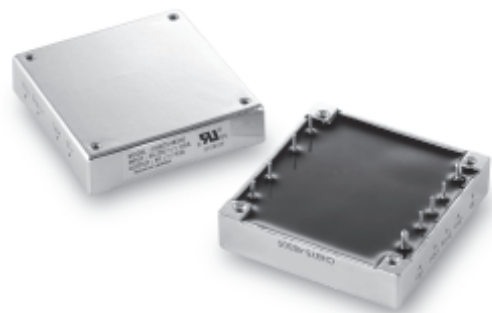


75 Watt, CHB Series, DC-DC Converter (Single Output)

ALL PSU LTD
Electronic Power Solutions

- Wide 2:1 Input Range
- Tightly Regulated Outputs
- 1500V Isolation
- Industry Standard Encapsulated Package
- Five Sided Metal Case
- Continuous Short Circuit Protection
- High Efficiency up to 86%
- -40 to +100 °C Operational Temperature Range



Specification (typical values shown)

Input Ranges.....	9~18 Volts, 18~36 Volts, 36~75 Volts
Outputs.....	Single (see table below plus trim range of +/-10%)
Line Regulation.....	+/-0.2% max. (across full input range)
Load Regulation.....	+/-0.2% max. (zero load to full load)
Efficiency.....	See table for each model
Short Circuit Protection.....	Continuous
Over Current Protection.....	110~150% of nominal rated output
Isolation Voltage.....	I/P~O/P: 1.5kVDC, I/P&O/P~Case: 1.5kVDC
Switching Frequency.....	300kHz (48V I/P models), others: 400kHz
Operating Temperature.....	-40 to +100 °C case temperature @ full load
Thermal Shutdown.....	100 °C (typ.) case temperature
Storage Temperature.....	-55 to +105 °C
Approval.....	UL(cUL), TUV
Case Material.....	Aluminium, 5 sided shield
Weight.....	92 g

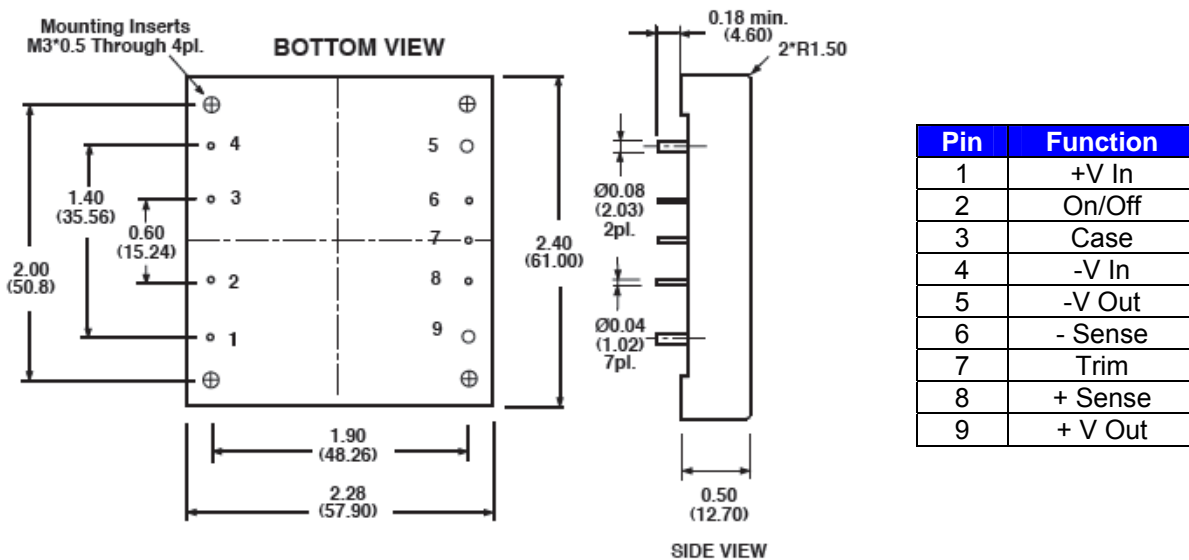
Models and Ratings

Model	Input Range	Output Voltage	Output Current	Efficiency
CHB75-12S25	9~18 VDC	2.5 V	15.0 A	76%
CHB75-12S33	9~18 VDC	3.3 V	15.0 A	78%
CHB75-12S05	9~18 VDC	5.0 V	15.0 A	81%
CHB75-12S12	9~18 VDC	12.0 V	6.25 A	84%
CHB75-12S15	9~18 VDC	15.0 V	5.0 A	84%
CHB75-12S24	9~18 VDC	24.0 V	3.13 A	84%
CHB75-24S25	18~36 VDC	2.5 V	15.0 A	77%
CHB75-24S33	18~36 VDC	3.3 V	15.0 A	79%
CHB75-24S05	18~36 VDC	5.0 V	15.0 A	82%
CHB75-24S12	18~36 VDC	12.0 V	6.25 A	85%
CHB75-24S15	18~36 VDC	15.0 V	5.0 A	85%
CHB75-24S24	18~36 VDC	24.0 V	3.13 A	86%
CHB75-48S25	36~75 VDC	2.5 V	15.0 A	77%
CHB75-48S33	36~75 VDC	3.3 V	15.0 A	79%
CHB75-48S05	36~75 VDC	5.0 V	15.0 A	83%
CHB75-48S12	36~75 VDC	12.0 V	6.25 A	85%
CHB75-48S15	36~75 VDC	15.0 V	5.0 A	85%
CHB75-48S24	36~75 VDC	24.0 V	3.13 A	86%

For mechanical data and pinout, see next page

ALL PSU Ltd, Unit D6 Laser Quay, Culpeper Close, Medway City Estate,
Rochester, Kent, ME24HU, Tel : 01634 725527, Fax : 01634 739111,
Email : sales@allpsu.co.uk , Web : www.allpsu.co.uk

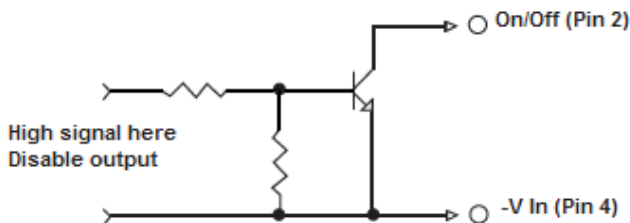
Mechanical Details and Pin-Out



Note:

Standard remote on/off , Open Circuit = Output on, <0.8 Volts = Output off
 For negative logic remote on/off, add suffix "N" to the part number, e.g. CHB75-12S12N

Remote On/Off Control



External Output Trim

