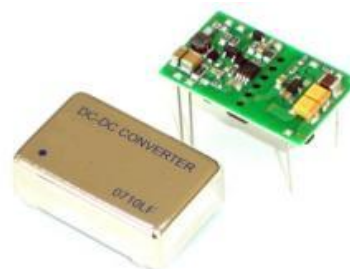


# 12 Watt, EVU Series, DC-DC Converter (Single & Dual Output)

**ALL PSU LTD**  
Electronic Power Solutions

- 2:1 Input Range
- 24 Pin DIL Package
- 1600V Isolation
- Continuous Short Circuit Protection
- Full SMD Technology
- High Efficiency up to 91%
- -40 to +100 °C Operational Temperature Range



## Specification (typical values shown)

Input Ranges.....	9~18 Volts, 18~36 Volts, 36-75 Volts
Outputs.....	Single or dual outputs available (see table below)
Line Regulation.....	+/-0.5%
Load Regulation.....	+/-0.5% for Single Outputs +/-1% for Dual Outputs
Efficiency.....	See table for each model
Voltage Accuracy.....	+/-1.2%
Short Circuit Protection.....	Continuous, auto-recovery
Isolation Voltage.....	Input to Output: 1600 VDC Input & Output to case: 1600 VDC
Operating Temperature.....	-40 to +60°C @ full load, derates to zero at 100°C.
Storage Temperature.....	-40 to +125 °C
Case Material.....	Nickel coated Copper
Switching Frequency.....	330 kHz typical
Ripple & Noise.....	85 mV pk-pk (20 MHz bandwidth)
Radiated Emissions.....	EN55022 Class A
Conducted Emissions.....	EN55022 Class A
Safety.....	IEC/EN60950-1 (designed to meet)
MTBF.....	>1 Mhrs (MIL-HDBK-217F) calculated

## Models and Ratings

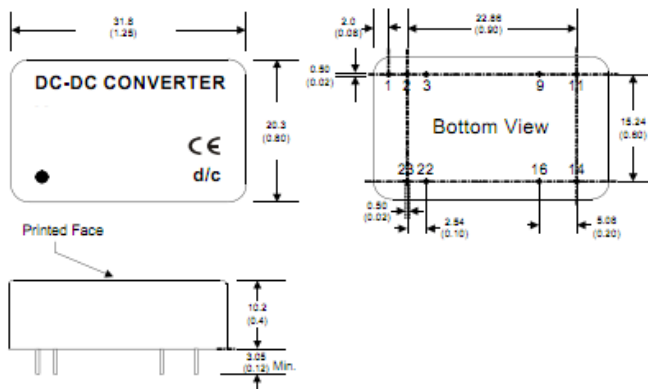
Model (9~18V input)	Model (18-36V input)	Model (36-75V input)	Output (VDC)	Output Current	Efficiency
<b>Single Output Units</b>					
EVU12-12S2R5	EVU12-24S2R5	EVU12-48S2R5	2.5 V	3500 mA	84~85%
EVU12-12S3R3	EVU12-24S3R3	EVU12-48S3R3	3.3 V	3500 mA	87~88%
EVU12-12S05	EVU12-24S05	EVU12-48S05	5.0 V	2400 mA	89%
EVU12-12S12	EVU12-24S12	EVU12-48S12	12.0 V	1000 mA	88~90%
EVU12-12S15	EVU12-24S15	EVU12-48S15	15.0 V	800 mA	88~89%
<b>Dual Output Units</b>					
EVU12-12D12	EVU12-24D12	EVU12-48D12	+/-12.0 V	+/-500 mA	88~90%
EVU12-12D15	EVU12-24D15	EVU12-48D15	+/-15.0 V	+/-400 mA	91~89%

For mechanical data and pinout, see next page

Specifications may change without notice, E&OE. ALL PSU Terms & Conditions apply.

**ALL PSU Ltd, Unit D6 Laser Quay, Culpeper Close, Medway City Estate,  
Rochester, Kent, ME24HU, Tel : 01634 725527, Fax : 01634 739111  
Email: sales@allpsu.co.uk Web: www.allpsu.co.uk**

## Mechanical Details and Pin-Out



Pin	Function	Function
	Single O/P	Dual O/P
1	Remote on/off	Remote on/off
2	-V in	-V in
3	-V in	-V in
9	No Pin	Common
11	No Connection	-V out
14	+V Out	+ V Out
16	-V Out	Common
22	+V Input	+V Input
23	+V Input	+V Input

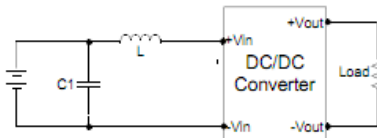
### Notes:

The input filter components (C1, & L) are used to help meet conducted emission requirements and should be mounted as close as possible to the module and lead lengths minimised.

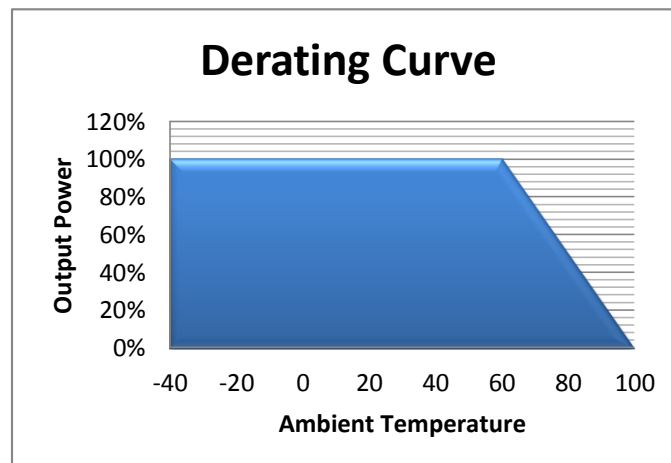
An external filter capacitor is required if the module has to meet EN61000-4-5

Suggested filter capacitor: Nippon chemi-con KY series 330 uF/100 V

### Input Filter



Model	C1	L
EVU12-xxxxxx	100uF/100V	12 uH



Specifications may change without notice, E&OE. ALL PSU Terms & Conditions apply.

**ALL PSU Ltd, Unit D6 Laser Quay, Culpeper Close, Medway City Estate,  
Rochester, Kent, ME2 4HU, Tel : 01634 725527, Fax : 01634 739111  
Email: sales@allpsu.co.uk Web: www.allpsu.co.uk**