



185 WATTS

REL-185 SERIES AC-DC

FEATURES:

- RoHS Compliant
- Universal 85-264 VAC Input
- High Efficiency
- Advanced SMT Design
- Compact 4.2" x 7.0" x 1.5" Size
- 2 Year Warranty
- Fits 1U Applications
- EN 60950-1 ITE Certification
- EN 60601-1 Medical Certification
- Class B Emissions for EN 55011/22
- Harmonic Current per EN 61000-3-2
- EMC to EN 61000-6-2 & EN 60601-1-2
- Optional Chassis and Cover
- One to Four Outputs



OPEN CHASSIS



CHASSIS/COVER

SAFETY SPECIFICATIONS

General	Protection Class: I
	Overvoltage Category: II
	Pollution Degree: 2
	Underwriters Laboratories File E137708/E140259
	UL 60950-1 2nd Edition, 2007 UL 60601-1 1st Edition, 2006 AAMI/ANSI ES 60601-1, 2005
	UL Recognition Mark for Canada File E137708/E140259
	TUV
	Low Voltage Directive (2006/95/EC of December 2006) RoHS Directive (Recast) (2011/65/EU of June 2011)

MODEL LISTING

MODEL NO.	OUTPUT 1 ⁽⁸⁾	OUTPUT 2 ⁽⁸⁾	OUTPUT 3 ⁽⁷⁾	OUTPUT 4 ⁽⁷⁾
REL-185-4001	+3.3V/20A ⁽¹⁾	+5V/10A	+12V/2A	-12V/2A
REL-185-4002	+5V/20A ⁽¹⁾	+3.3V/10A	+12V/2A	-12V/2A
REL-185-4003	+5V/20A ⁽¹⁾	+3.3V/10A	+15V/2A	-15V/2A
REL-185-4004	+5V/20A ⁽¹⁾	-5V/10A	+12V/2A	-12V/2A
REL-185-4005	+5V/20A ⁽¹⁾	-5V/10A	+15V/2A	-15V/2A
REL-185-4006	+5V/20A ⁽¹⁾	+24V/3A	+12V/2A	-12V/2A
REL-185-4007	+5V/20A ⁽¹⁾	+24V/3A	+15V/2A	-15V/2A
REL-185-3001	+5V/20A ⁽¹⁾	+12V/5A		-12V/3A
REL-185-3002	+5V/20A ⁽¹⁾	+15V/4A		-15V/3A
REL-185-2001	+3.3V/20A ⁽¹⁾	+5V/10A		
REL-185-2002	+5V/20A ⁽¹⁾	+12V/8A		
REL-185-2003	+5V/20A ⁽¹⁾	+24V/4A		
REL-185-2004	+12V/10A	-12V/6A		
REL-185-2005	+15V/8A	-15V/5A		
REL-185-2006	+15V/6A	+24V/4A		
REL-185-2007	+35V/3.5A	+12V/5.2A		
REL-185-1001	2.5V/37A ⁽²⁾			
REL-185-1002	3.3V/37A ⁽²⁾			
REL-185-1003	5V/37A ⁽²⁾			
REL-185-1004	12V/15.4A			
REL-185-1005	15V/12.3A			
REL-185-1006	24V/7.7A			
REL-185-1007	28V/6.6A			
REL-185-1008	48V/3.8A			
REL-185-1009	6.3V/29A ⁽²⁾			

ALL PSU LTD

Unit D6 Laser Quay | Culpeper Close | Medway City Estate | Rochester | Kent
ME2 4HU Tel : 01634 725527 | Fax : 01634 739111
Email : sales@allpsu.co.uk | Web : www.allpsu.co.uk

OUTPUT SPECIFICATIONS

Total Output Power at 50°C	135W 185W	Convection Cooled 300 LFM Forced Air
Output Voltage Centering	Output 1: ± 0.5% Output 2: ± 5.0% Output 3: ± 5.0% Output 4: ± 5.0%	(All outputs at 50% load)
Output Voltage Adjust Range	Output 1: 95 - 105%	
Load Regulation	Output 1: 0.5% Output 2: 5.0% (4001,4,5, 2001) 10.0% (4002,4003) 15.0% Output 3: 5.0% Output 4: 5.0%	(10-100% load change) (10-100% load change) (20-100% load change) (20-100% load change) (10-100% load change) (10-100% load change)
Source Regulation	Outputs 1 - 4: 0.5%	
Cross Regulation	Outputs 2 - 4: 6.0%	
Output Noise	Outputs 1 - 4: 1.0%	
Turn on Overshoot	None	
Transient Response	Outputs 1 - 4	
Voltage Deviation	5.0%	
Recovery Time	500µS	
Load Change	50% to 100%	
Output Overvoltage Protection	Output 1: 110% to 150%	
Output Overpower Protection	110-160% rated Pout, cycle on/off, auto recovery	
Hold Up Time	16 mS min., Full Power, 85V Input	
Start Up Time	5 Seconds, 120V Input	

INPUT SPECIFICATIONS

Source Voltage	85 - 264 Volts AC
Frequency Range	47 - 63 Hz
Peak Inrush Current	40A
Efficiency	82% Typical, Full Power, 230V, varies by model
Power Factor	0.95 (Full Power, 230V)

ENVIRONMENTAL SPECIFICATIONS

Ambient Operating	0° C to + 70° C
Temperature Range	Derating: See Power Rating Chart
Ambient Storage Temp. Range	- 40° C to + 85° C
Temperature Coefficient	Outputs 1 - 4: 0.02%/°C

GENERAL SPECIFICATIONS

Means of Protection	
Primary to Secondary	2MOPP (Means of Patient Protection)
Primary to Ground	1MOPP (Means of Patient Protection) (1MOOP- Singles)
Secondary to Ground	Operational Insulation(Consult factory for 1MOOP or 1MOPP)
Dielectric Strength ⁽¹⁷⁾	
Reinforced Insulation	5656 VDC, Primary to Secondary, 1 Sec.
Basic Insulation	2545 VDC, Primary to Ground, 1 Sec.
Operational Insulation	707 VDC, Secondary to Ground, 1 Sec.
Leakage Current	
Earth Leakage	<300uA NC, <1000uA SFC
Touch Current	<100uA NC, <50uA SFC
Power Fail Signal	Logic low with input power failure 10 mS minimum prior to Output 1 dropping 1%

Remote On/Off (optional)	Contact closure shuts off all outputs
Remote Sense	250mV compensation of output cable losses
Mean-Time Between Failures	100,000 Hours min., MIL-HDBK-217F, 25° C, GB
Weight	1.70 Lbs. Open Frame/ 2.70 Lbs. Chassis and Cover

ELECTROMAGNETIC COMPATIBILITY SPECIFICATIONS

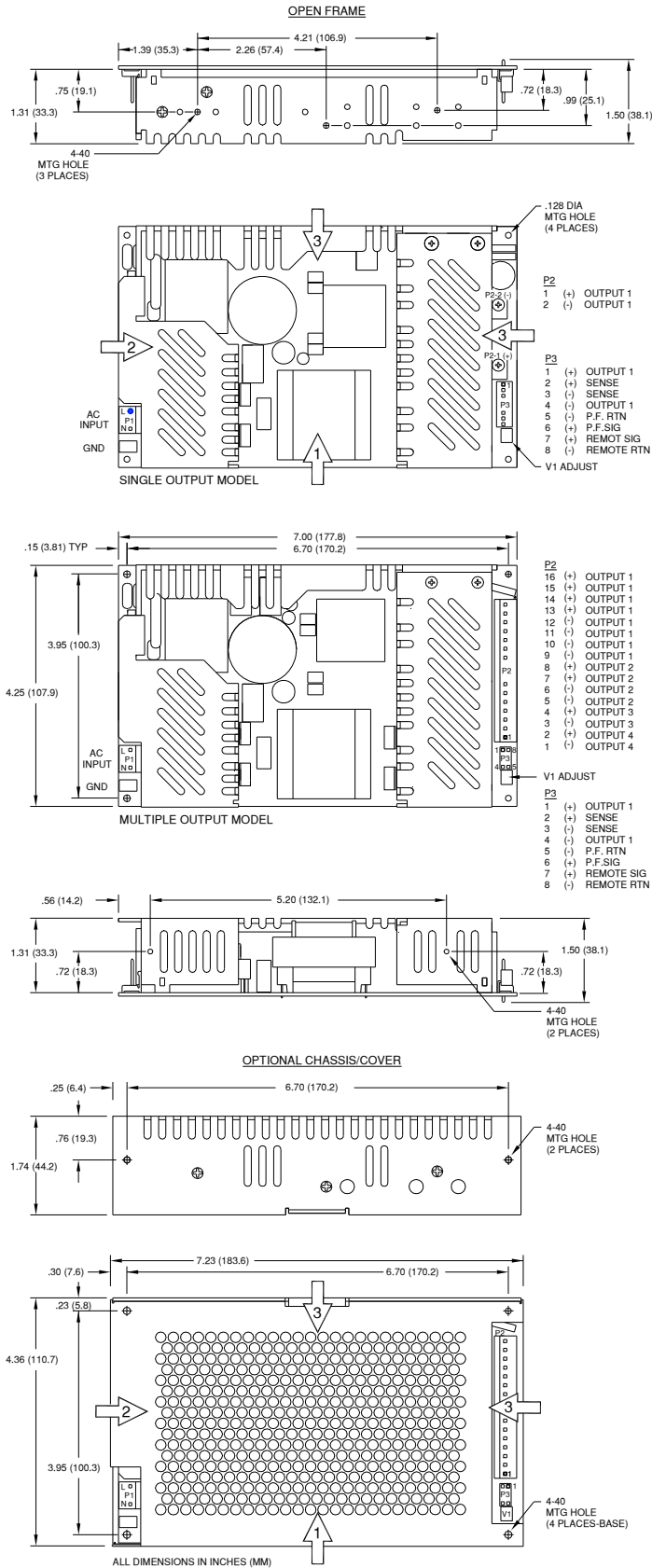
Electrostatic Discharge	EN 61000-4-2	±8kV Contact/ ±8kV Air Discharge
Radiated Electromagnetic Field	EN 61000-4-3	80MHz-2.5GHz, 10/m, 80% AM
EFT/Bursts	EN 61000-4-4	±2 kV
Surges	EN 61000-4-5	±1 kV Common/ ±2 kV Differential Mode
Conducted Immunity	EN 61000-4-6	.15 to 80MHz, 10V, 80% AM
Voltage Dips and Interruptions	EN 61000-4-11	30% Reduction, 500ms 95% Reduction, 10ms 60% Reduction, 1s (Criteria B) 95% Reductions, 5000ms
Voltage Interruptions	EN 61000-4-11	95% Reduction, 5s
Radiated Emissions	EN 55011/22	Class B
Conducted Emissions	EN 55011/22	Class B
Harmonic Current Emissions	EN 61000-3-2	
Voltage Fluctuations and Flicker	EN 61000-3-3	

ORDERING INFORMATION

Please specify the following optional features when ordering:

CH - Chassis	RE - Remote inhibit
CO - Cover	I/O - Isolated outputs
TS - Terminal Strip	SB - Stand By Voltage

REL-185 SERIES MECHANICAL SPECIFICATIONS



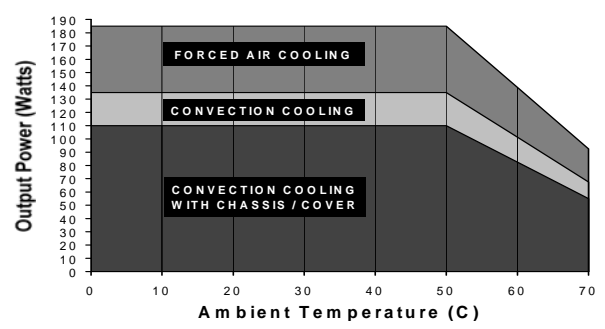
NOTES

Consult factory for alternate output configurations.
 Consult factory for positive, negative or floating outputs.
 Refer to Applications Information for complete output power ratings.
 All specifications are maximum at 25° C, 185W unless otherwise stated, may vary by model and are subject to change without notice.

APPLICATIONS INFORMATION

- Rated 15A maximum with convection cooling.
- Rated 27A maximum with convection cooling.
- Total power must not exceed 135 watts with convection cooling on open frame models except where noted.
- Total power must not exceed 185 watts with 300 LFM forced air cooling on open frame models.
- Total power must not exceed 110 watts with convection cooling and chassis/cover option.
- Total power must not exceed 185 watts with 300 LFM forced air cooling and chassis/cover option.
- Total current from Outputs 3 & 4 must not exceed 3 amps with convection cooling.
- Total current from Outputs 1 & 2 must not exceed 20 amps with convection cooling.
- Semiconductor case temperatures must not exceed 110°C.
- Each output can deliver its rated current but total output power must not exceed maximum power as determined by the cooling method stated above.
- Sufficient area must be provided around convection cooled power supplies to allow natural movement of air to develop.
- 300 linear feet per minute of airflow must be maintained one inch above any point of the heatsink in the direction shown when forced air cooling is required.
- This product is intended for use as a professionally installed component within information technology and medical equipment.
- A minimum load of 10% is required on output one to ensure proper regulation of remaining outputs.
- Remote sense terminals may be used to compensate for cable losses up to 250mV. The use of a twisted pair is recommended as well as a decoupling capacitor (0.1 - 10µF) and a capacitor of 100µF/amp connected across the load side.
- Peak to peak output ripple and noise is measured directly at the output terminals of the power supply, without the use of the probe ground lead or retractable tip, 20 MHz bandwidth.
- This product was type tested and safety certified using the dielectric strength test voltages listed in Table 6 of IEC 60601-1:2005. In consideration of Clause 8.8.3, care must be taken to insure that the voltage applied to a reinforced insulation does not overstress different types and levels of insulation. Primary and secondary to ground capacitors may need to be disconnected prior to performing a dielectric strength test on the power supply or the end product. It is highly recommended that the DC test voltages listed in DVB.1, Annex DVB of UL 60601-1 1st Edition are not exceeded during a production-line dielectric strength test of the assembled end product. Please consult factory for further information.
- This power supply has been safety approved and final tested using a DC dielectric strength test. Please consult factory before performing an AC dielectric strength test.
- Maximum screw penetration into bottom chassis mounting holes is .100 inches.
- Maximum screw penetration into side chassis mounting holes is .250 inches.
- To meet emissions specifications, all four mounting hole ground pads must be electrically connected to a common metal chassis. Chassis/cover option recommended.
- This product includes only one fuse in the input circuit. In consideration of Clause 8.11.5 of IEC 60601-1:2005, a second fuse may be required in the end product.

MAXIMUM OUTPUT POWER VS. AMBIENT TEMPERATURE



CONNECTOR SPECIFICATIONS

P1	AC Input	.156 friction lock header mates with Molex 09-50-3031 or equivalent crimp terminal housing with Molex 2478 or equivalent crimp terminal.
P2	DC Output (Single)	6-32 screw down terminal mates with #6 ring tongue terminal. (10 in-lb max)
P2	DC Output (Multiple)	.156 friction lock header mates with Molex 09-50-3161 or equivalent crimp terminal housing with Molex 2478 or equivalent crimp terminal.
G	Ground	.187 quick disconnect terminal.
P3	Option/Sense (Single)	.100 friction lock header mates with Molex 50-57-9008 or equivalent crimp terminal housing with Molex type 71851 or equivalent crimp terminal.
P3	Option/Sense (Multiple)	.100 breakaway header mates with Molex 22-55-2081 or equivalent crimp terminal housing with Molex type 71851 or equivalent crimp terminal.

RECOMMENDED AIR FLOW DIRECTION

- 1 – Optimum 2 – Good 3 – Fair